

# NEW GLASS EXPANSION D-TORCH\*

**Reduce your ICP running costs  
with our revolutionary new  
demountable torch.**

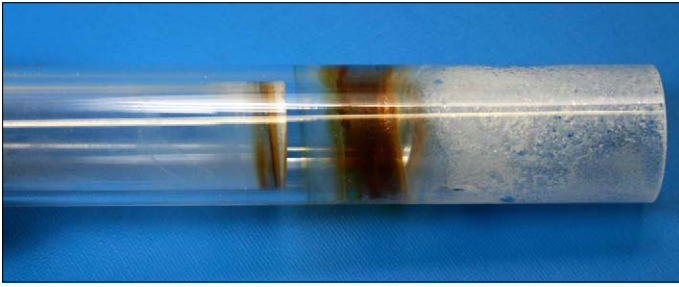


- Why replace the entire torch when just the outer tube wears? With the D-Torch, you need only replace the outer tube. And most operators will be saving money after only two replacements.
- Interchangeable quartz and ceramic outer tubes.
  - Quartz is ideal for most aqueous samples.
  - Ceramic lasts much longer for samples with high dissolved solids or for organics applications such as wear metals in engine oils.
  - Ceramic provides low background for Si determinations.
- Interchangeable injectors for aqueous, organics, high dissolved solids or HF applications.

The D-Torch is also much lower cost than other demountable torches. Please contact us for information on a D-Torch to suit your ICP model.

\* Patent Pending

A combination of high temperature and salt deposit causes a quartz torch to devitrify. Higher concentrations of salt in the samples lead to more rapid devitrification. The quartz torch in the photo was run for only 6 hours with samples containing 10% NaCl and is already badly degraded.



By contrast, the ceramic material does not devitrify and is not affected by salt deposits. The ceramic D-Torch in the photo was run for the same period and with the same samples as the quartz torch but shows no degradation at all.

#### Comments by D-Torch users:

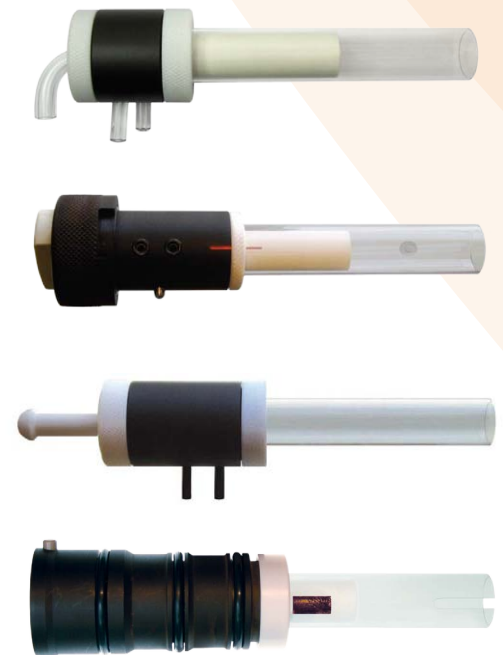
The D-Torch performs really well and we have had no problems with it. It performs just as well if not better than the single piece torches and obviously saves a lot of money in replacement parts.

The torch has been running like a Swiss watch ... The ceramic torch has shown no signs of deterioration, with 80 hrs/week running.

The Ceramic torch is quite excellent, mostly from a maintenance standpoint, it forms much less deposits on it and that which forms is usually very easy to clean ... I do think we'll continue buying ceramic torches mostly because they last much longer and are so much easier to keep clean.

I am quite pleased with the D-Torch. It's stable and rather easy to maintain and clean. It's also quite excellent for analyzing silica in a hydrofluoric digestion, I noticed my blanks for that were much lower and stable.

The D-Torch is performing very well. The ceramic outer has been in almost constant service 22 hours a day, 6 days a week since we purchased it and we have had no issues...We are due to purchase a replacement ICP and will certainly be purchasing another D-Torch to go along with it.



The D-Torch is available for a range of ICP models, including those from PerkinElmer, Spectro, Thermo and Varian. Please contact us for details.



#### Distributor:

**AHF analysentechnik AG**  
Kohlplattenweg 18  
DE-72074 Tübingen  
Germany

Tel.: +49 (0)7071 970 901-0  
Fax: +49 (0)7071 970 901-99  
info@ahf.de  
www.ahf.de



**GLASS EXPANSION**  
Quality By Design